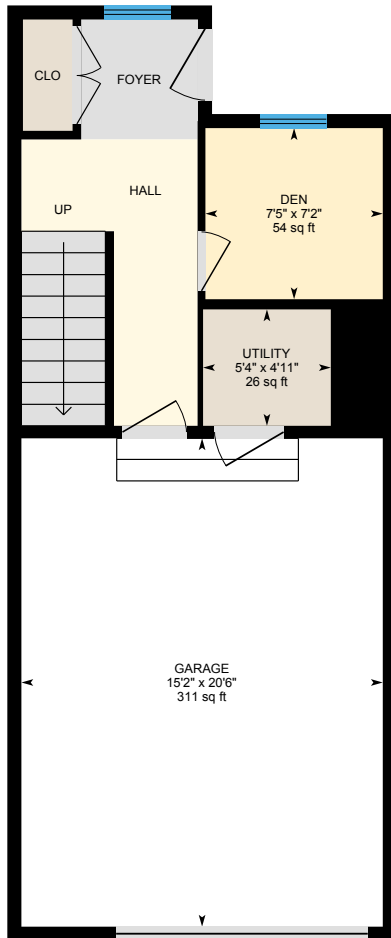
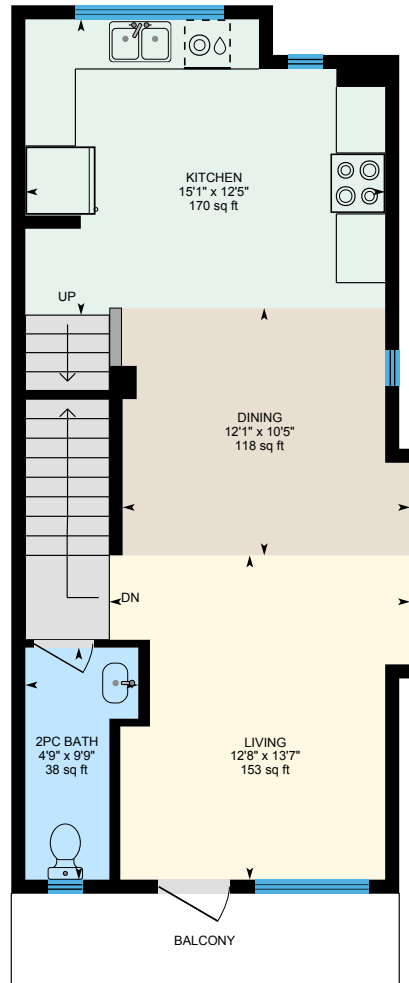


Apaar Homes 70 Bayview St, Airdrie, AB

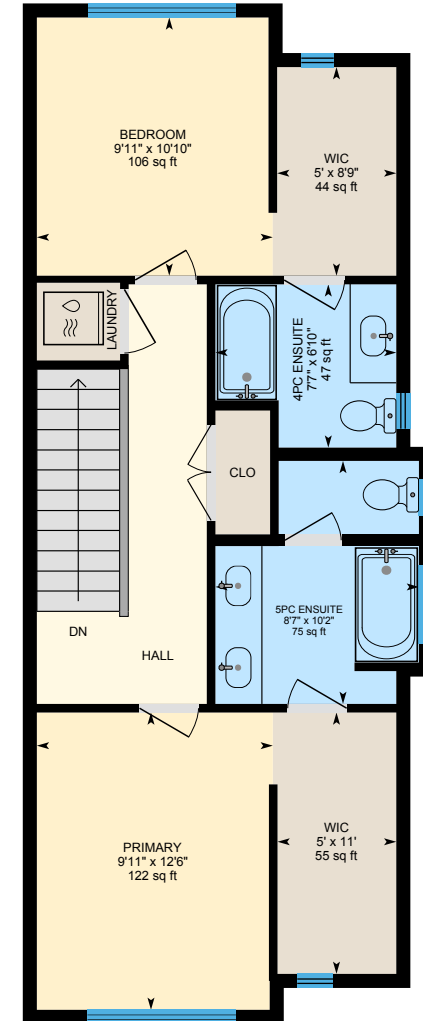
Main Building: Total Exterior Area Above Grade 1555.62 sq ft



Entry Floor
Exterior Area 261.42 sq ft



Main Floor
Exterior Area 606.73 sq ft



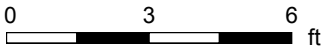
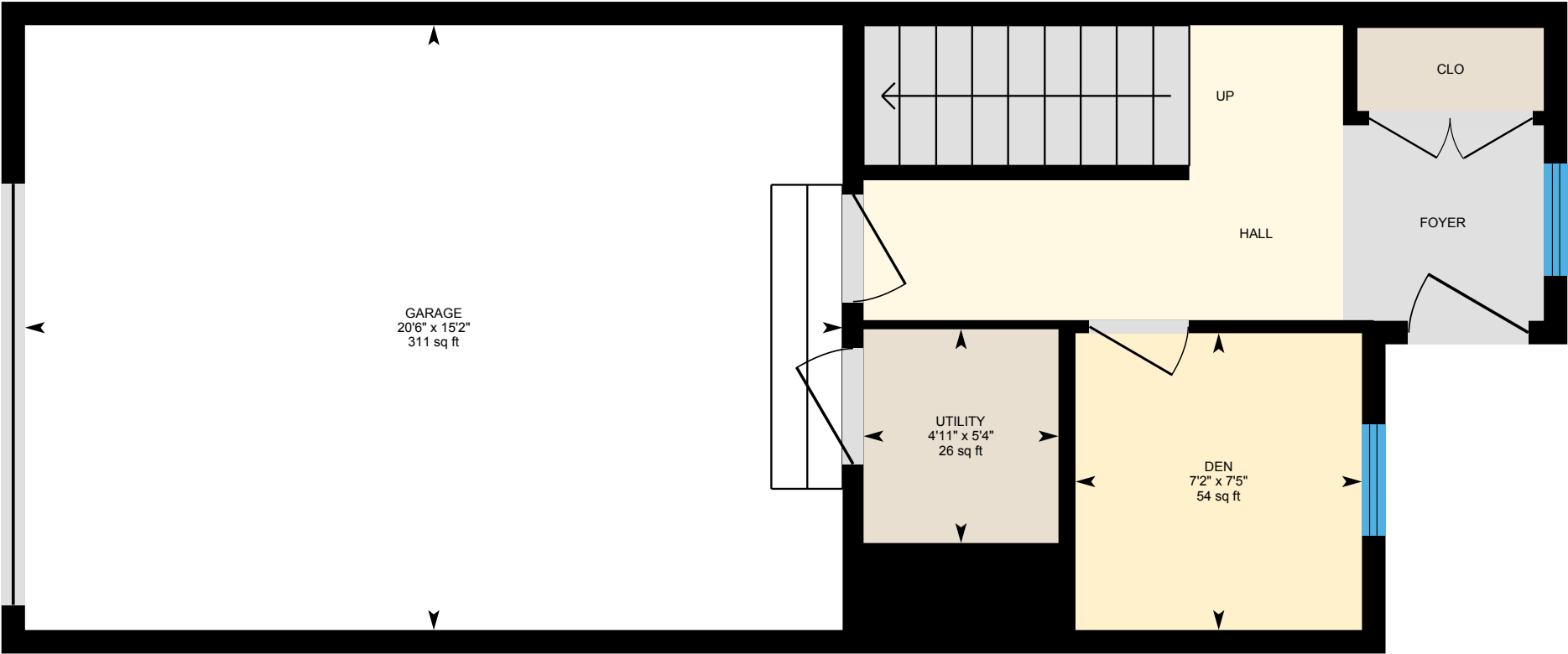
1st Floor
Exterior Area 687.47 sq ft

0 4 8
ft

PREPARED: 2025/02/28

Apaar Homes 70 Bayview St, Airdrie, AB

Entry Floor Exterior Area 261.42 sq ft
Interior Area 223.21 sq ft
Excluded Area 345.39 sq ft



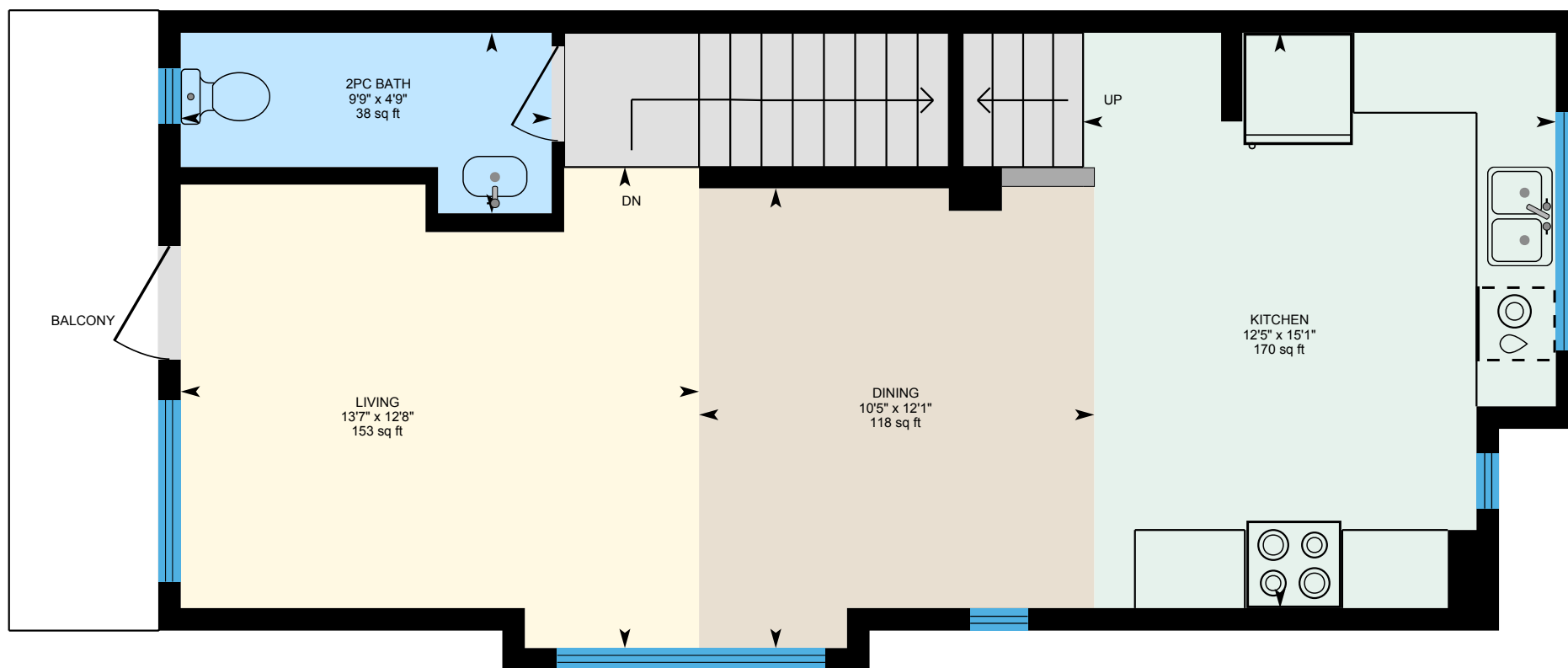
PREPARED: 2025/02/28



White regions are excluded from total floor area in iGUIDE floor plans. All room dimensions and floor areas must be considered approximate and are subject to independent verification.

Apaar Homes 70 Bayview St, Airdrie, AB

Main Floor Exterior Area 606.73 sq ft
Interior Area 543.59 sq ft



0 3 6 ft

PREPARED: 2025/02/28



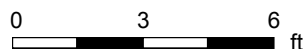
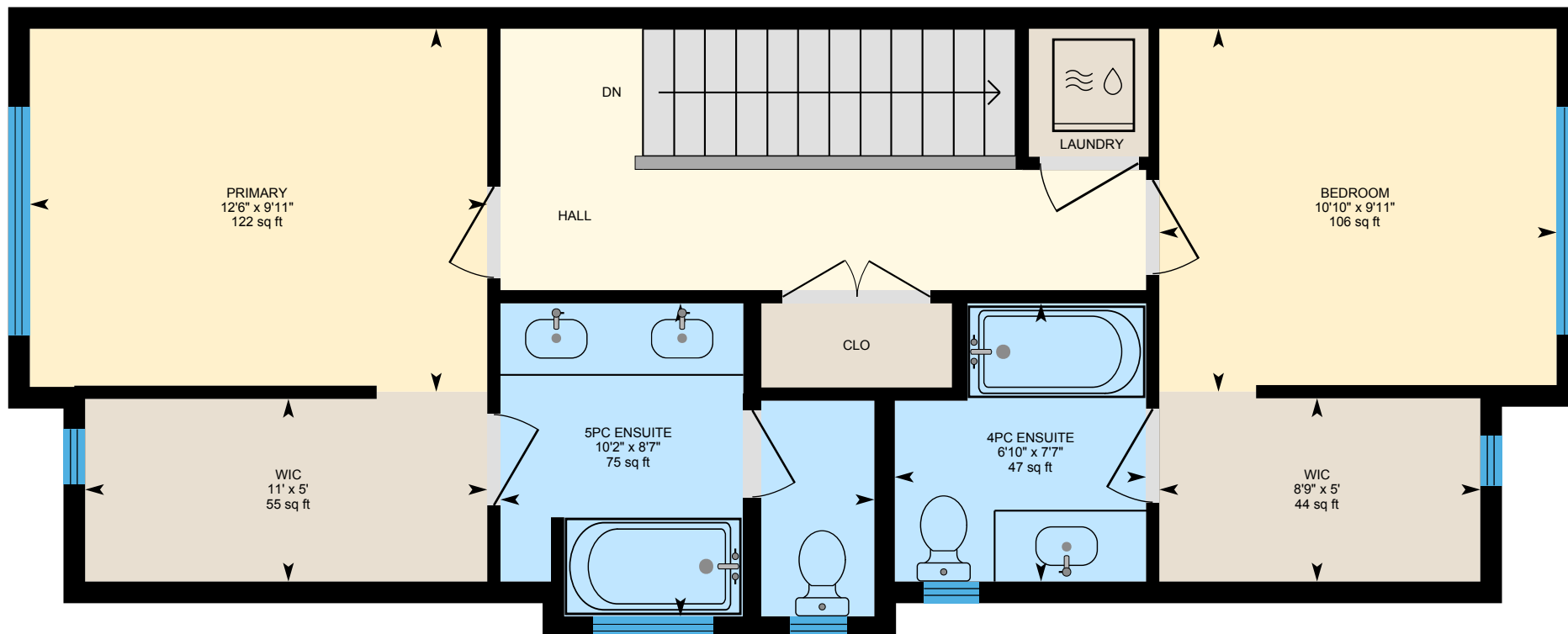
White regions are excluded from total floor area in iGUIDE floor plans. All room dimensions and floor areas must be considered approximate and are subject to independent verification.

iGUIDE

Apaar Homes 70 Bayview St, Airdrie, AB

1st Floor Exterior Area 687.47 sq ft

Interior Area 617.92 sq ft



PREPARED: 2025/02/28



White regions are excluded from total floor area in iGUIDE floor plans. All room dimensions and floor areas must be considered approximate and are subject to independent verification.